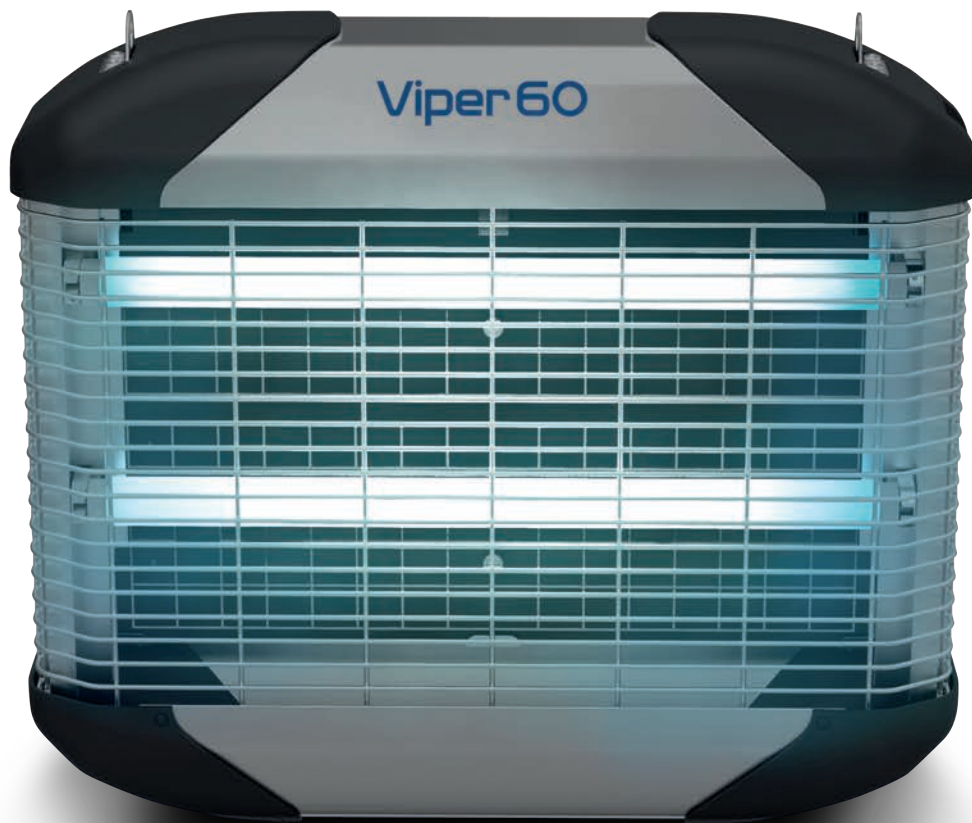


# Viper 60

VERSATILE AND COMPACT ILT FOR  
COMMERCIAL APPLICATIONS



High performance ILT with glue board,  
designed for areas of high activity for  
flying insects.



Brandenburg  
CREATING BETTER

- 4 x 15 W Lamps
- Quick and easy, tool free servicing
- Wall or corner mounted and ceiling suspended installation options

[www.b-one.com](http://www.b-one.com)

# Viper 60



## APPLICATIONS

Restaurants

Bars

Fast Food

Supermarkets

Commercial Kitchens

Food Production

Combining high performance with versatility, Viper 60 provides a choice of mounting location, ensuring all application requirements are satisfied.

Fitted with four 15 W lamps, Viper 60 attracts flies into a large grid marked glue board to assist with HACCP compliance.

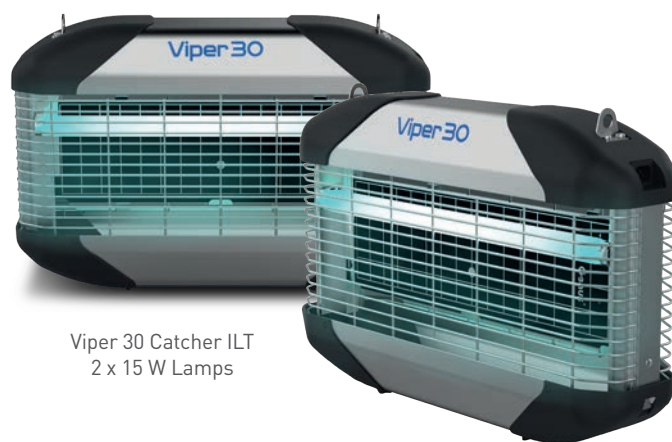
Equipped with external front and back hinging grills to allow for easy service access, minimising service downtime.

The Viper 60 can be wall mounted, corner mounted or suspended from the ceiling allowing for unit placement precisely where needed.

## Features and Benefits

- Quick and easy, tool free servicing
- Optional sleeved lamps for added safety in food production areas
- Wall mounted, corner mounted or ceiling suspended installation options

## Also Available Viper 30



Viper 30 Catcher ILT  
2 x 15 W Lamps

Order Code	Description	Dimensions mm (H x W x D)	Weight	Lamps
V3C60-1GX2023001	Viper 60 Catcher, Standard Lamps	430 x 512 x 134	8 kg	4 x 15 W
V3C60-2GX2023001	Viper 60 Catcher, Sleeved Lamps	430 x 512 x 134	8 kg	4 x 15 W



## BRANDENBURG UK LIMITED

29 Navigation Drive  
Hurst Business Park,  
Brierley Hill, West Midlands  
DY5 1UT, UK

Phone: +44 (0) 1384 472 900  
Fax: +44 (0) 1384 472 911  
Email: [sales@b-one.com](mailto:sales@b-one.com)  
Web: [www.b-one.com](http://www.b-one.com)